

The background is a solid blue color. In the upper left and lower right corners, there are abstract white geometric shapes. These shapes consist of overlapping curved lines and straight lines, creating a sense of depth and movement. The top shape is a complex polygon with curved sides, and the bottom shape is a similar but more elongated polygon. The text is centered in the middle of the page.

Nexus Integra Presentation Layer

nexusintegra

Canvas (SCADA)

The Canvas tool of Nexus Integra provides a quick and easy way to build a global operating centre to manage all the geographically dispersed assets of a company.

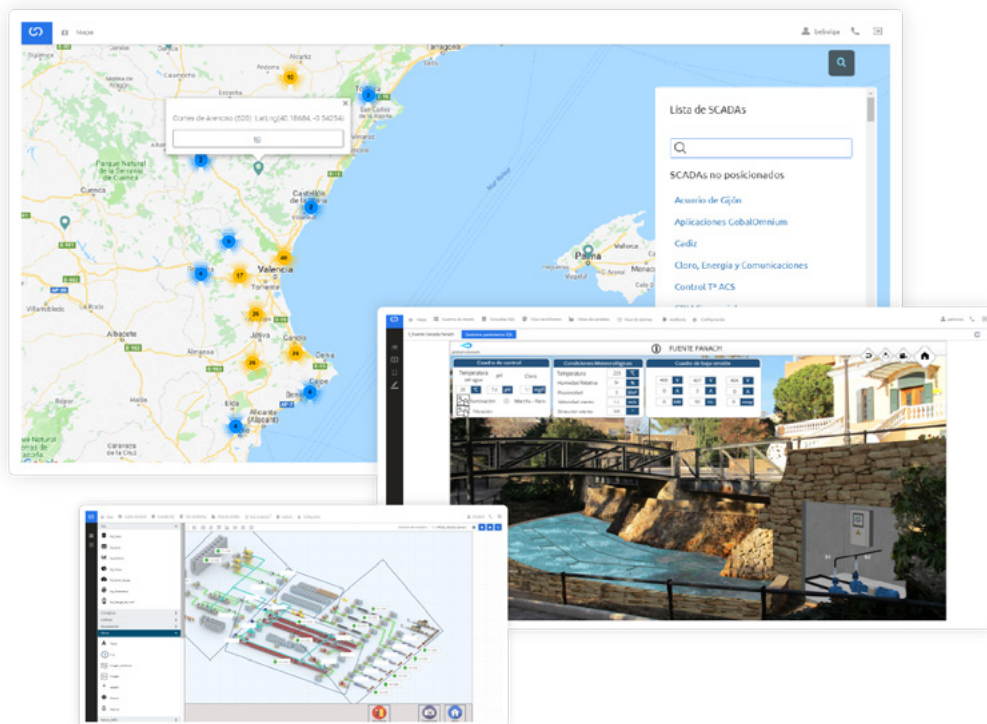
Users can control, monitor and navigate their installations on a map. Within each of these installations there may be one or more SCADAs.

The canvas module offers a powerful palette to design new elements and configure them, giving the user complete autonomy to design and update the different synoptics that make up the SCADA at any time.

Also, significant features are constantly added since the platform is in permanent evolution. For instance, frame controls allow the connection in SCADA layouts of external information sources and applications.

The Canvas module offers the possibility to visualize and interact with other modules such as the alarm, dashboards, reports....

Users can add in Canvas Module relevant information such videos, technical information, technical templates to access it in a simple way.

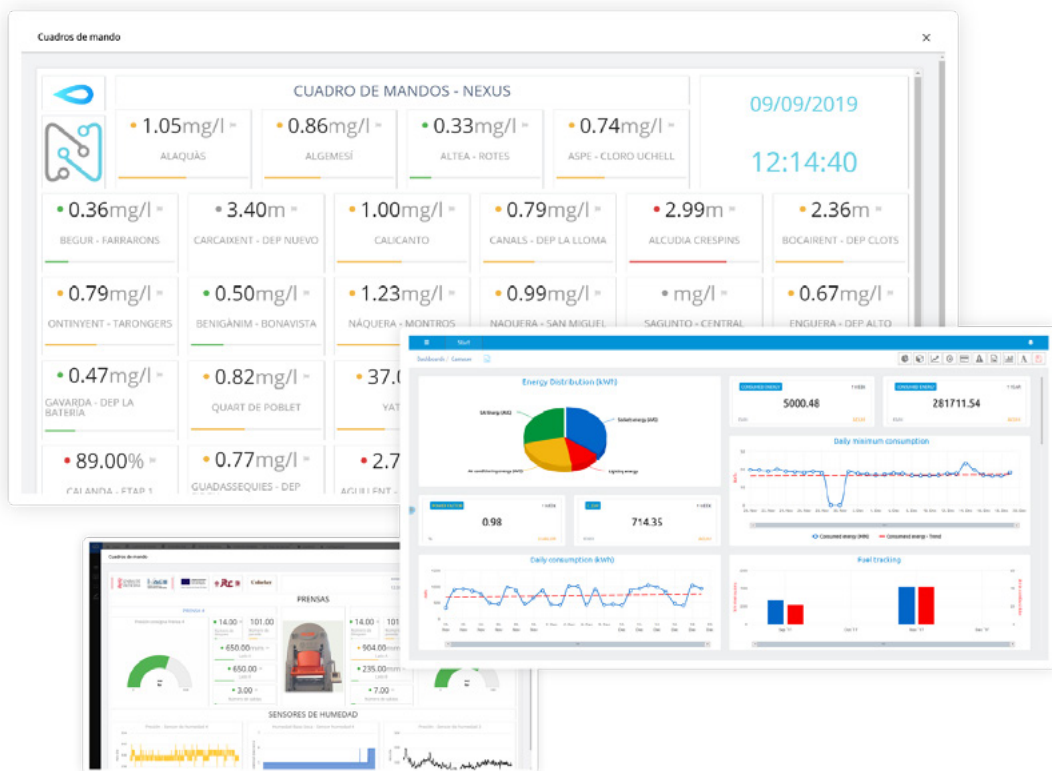


BI Dashboards

The application allows the user to analyze the process information to take decisions and plan the next actions. As well as control the production process from a single point through customizable dashboards.

The BI Dashboards module of Nexus Integra enables the creation of interactive and customizable dashboards of the company with crossed information related to production chain, business department...

This app facilitates the analysis of trends of different metrics or the creation of comparative studies. This allows the user to analyze the process information to take decisions and plan the next actions. As well as control the production process from a single point through customizable dashboards.

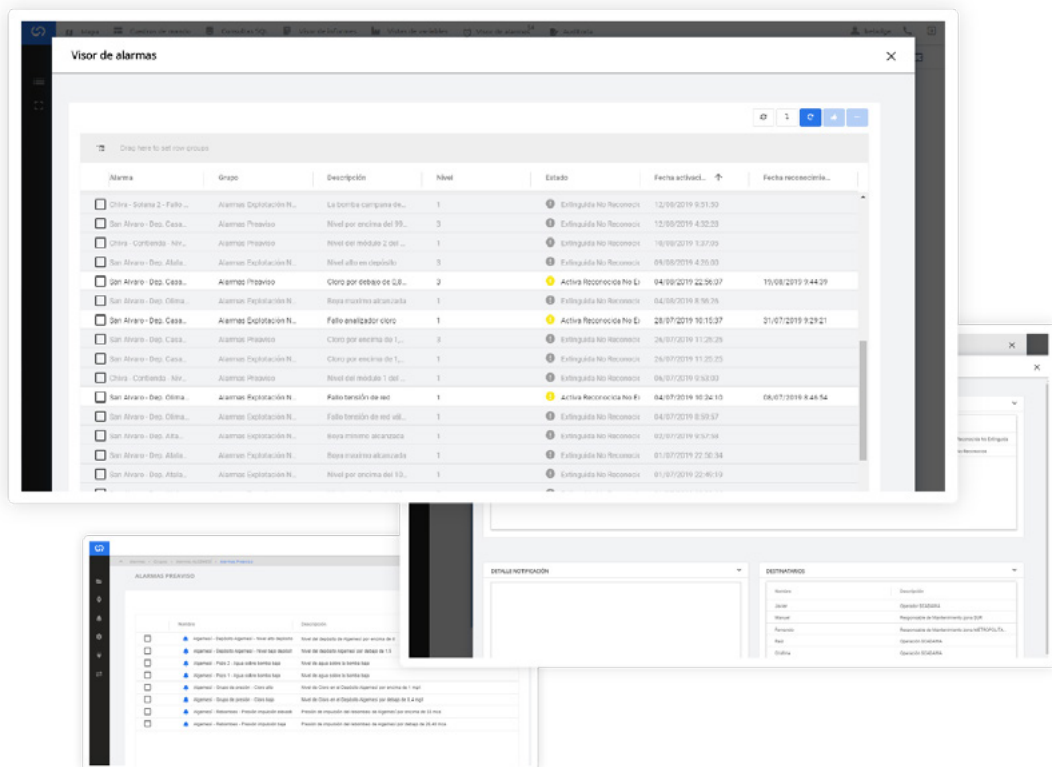


Alarms

A customizable alarm system allows to link all critical process to a managed group of users to be aware of any process out of the correct value range.

Alarms Module is a very powerful tool since it allows the system users to organize and categorize all the custom defined alarm rules according to many business criteria.

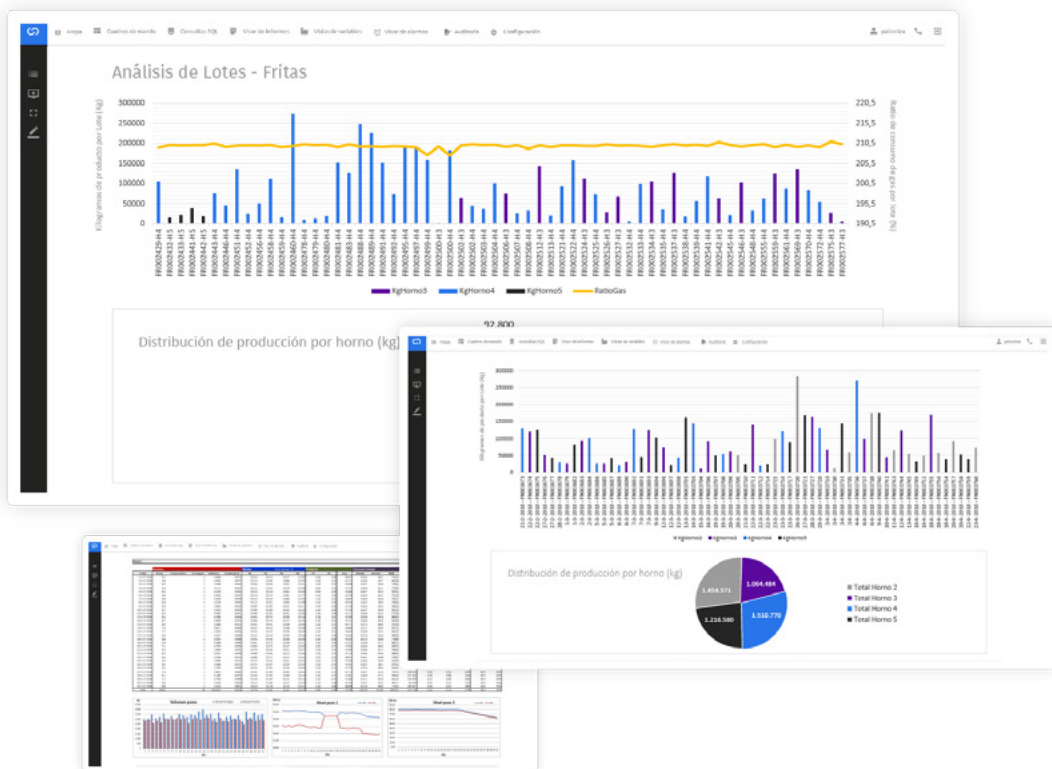
Once defined, alarms can be attached to one or several SCADA systems, where the operator can be alerted and has the ability of recognizing and reporting the active alarms.



Reports

Nexus reporting module allows the users to analyze historical data both online and offline based on MS Excel and PDF reports.

Reports are configured using system data and data views and can be, as well, shared among users and standardized through the whole organization.

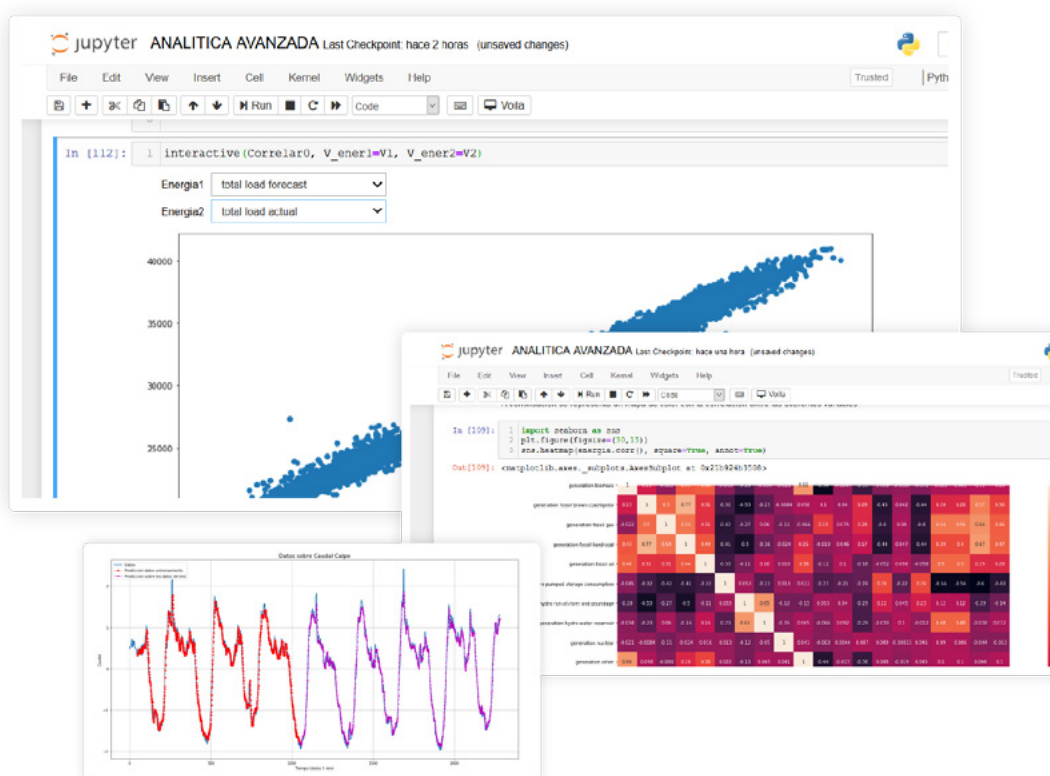


App Machine Learning

The Nexus Integra Machine Learning app allows data scientists to apply the benefits of advanced algorithms in data analytics in a simple and intuitive way. The native and bidirectional connection with prototyping and analysis tools such as Jupyter Notebooks (among others) allows the rapid generation of results and the implementation of complex business rules in an open and standard way, being able to actuate on production processes.

Similarly, the extension of a prototype application to the whole process, or the production of complex algorithms can be managed very easily, in line with the overall operation of Nexus Integra platform. Either the environment or the algorithm programming language (Python, R, Matlab...) can be selected, and once the model is designed and validated, it is possible to control the details of its execution and on which elements of the productive environment can operate in a visual and intuitive way.

Nexus Integra's Machine Learning app. helps to easily and flexibly manage from triggering an event or alarm, to producing and governing production.



Secured web API

Nexus Integra provides a secured web API service to allow external applications to exchange information with the common data core of the platform. This information, flowing in both directions, can be used by these applications to feed their own systems, or by Nexus Integra apps to add complementary processed information, such as the results of AI or ML algorithms, etc

The user can access to the external applications from the main menu or from the Canvas module.





nexusintegra

Follow us on:



in

www.nexusintegra.io

